

Datalogger and USB Interface

Hardware Requirements and Setup	2
Software Requirements and Setup	3
On-Line Operation	6
Run the software.....	6
Data Convert.....	8
Apply for Graph.....	10
Histogram & Ln (Percentile Sound Level).....	11
Control Panel.....	12
1. LCD Contrast Setting.....	13
2. Pause Setting.....	14
3. LCD APO Setting.....	14
4. LED Alarm Setting.....	15
5. DosiMeter Setting.....	16
6. Auto Lock Keypad Setting.....	17
7. Timers Setting.....	17
8. Auto Scroll Screens Setting.....	18
9. Screen Setting.....	19
10. Welcome Text Setting.....	20
11. Calibration Setting.....	20
12. Lunch Time Setting.....	21
13. Interval Time Setting.....	21
RTC (Real Time Clock).....	22
Read SD Card	23
Export PDF File.....	23
Delete SD Card File	24
Language.....	25

H a r d w a r e R e q u i r e m e n t s a n d S e t u p

PC HardWare Requirements :

HDD, CD Rom, 486 PC or above, with available USB mini B / USB port

EGA or higher monitor

4M bytes or more memory size

PC HardWare Setup :

- 1) Switch off all power related to the PC
- 2) Connect the USB cable to USB port
- 3) Switch on all related power
- 4) Connect the USB mini B cable to the meter

Software Requirements and Setup

1 Start up windows system

2 Close all other applications

3 Insert the disk in CD drive

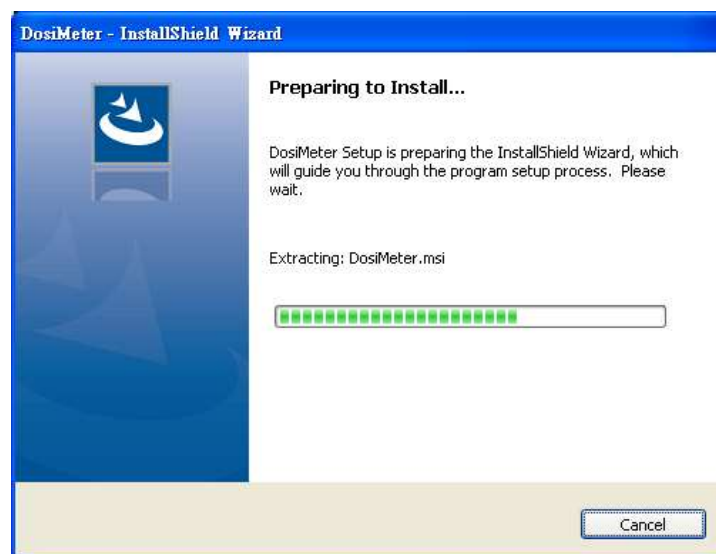
(if autorun does not start, open the CD drive then run “SetupInterface.exe”)

Follow the on-screen instructions.



Click Software Install

1).



Setup will run automatically.

2).



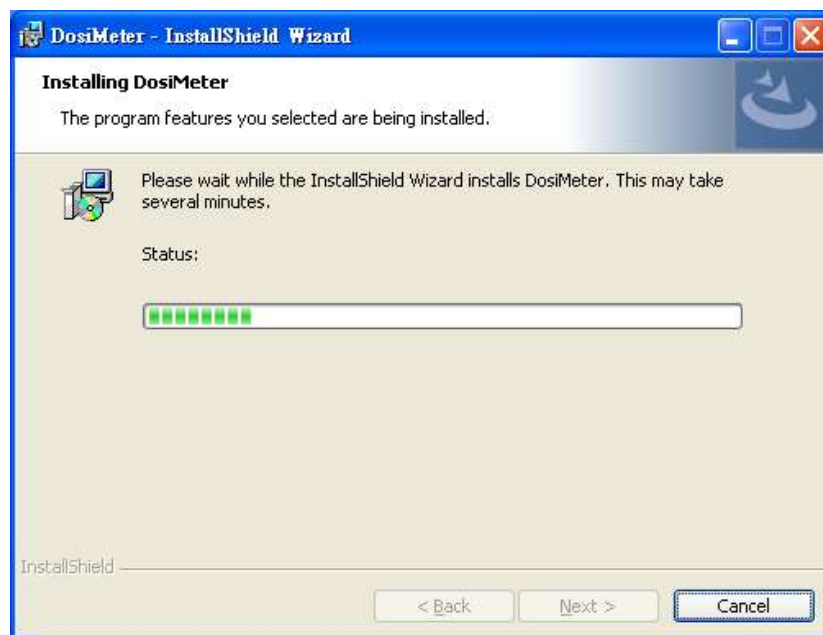
Click Next> button

3).



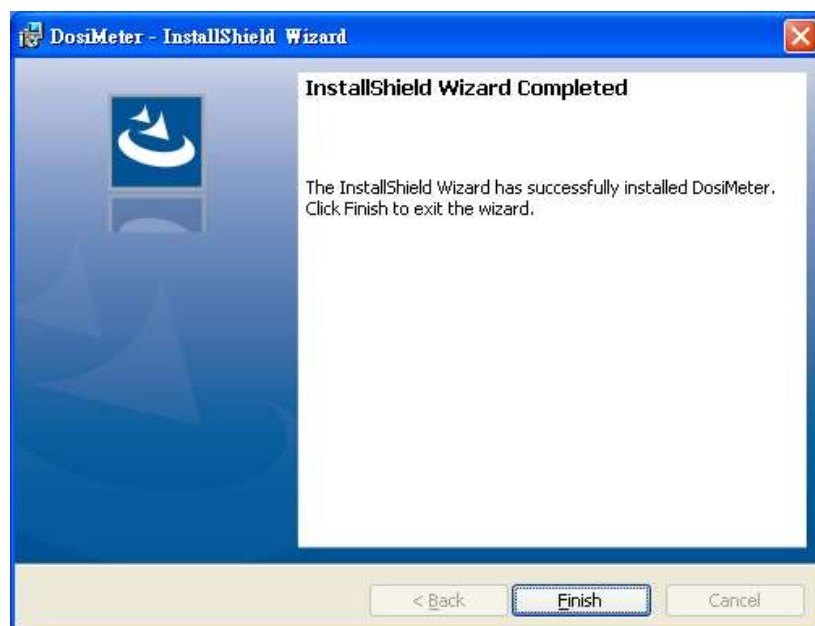
Click Install> button

4).



Setup will run automatically.

5).



Click **Finish** button to complete.

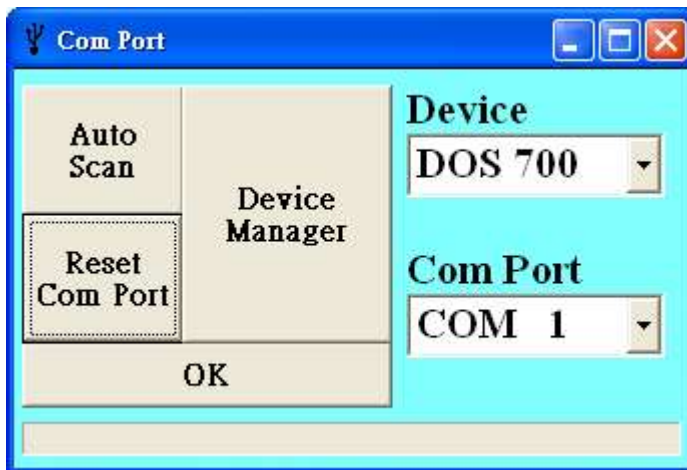
● On-Line Operation

● Run the software



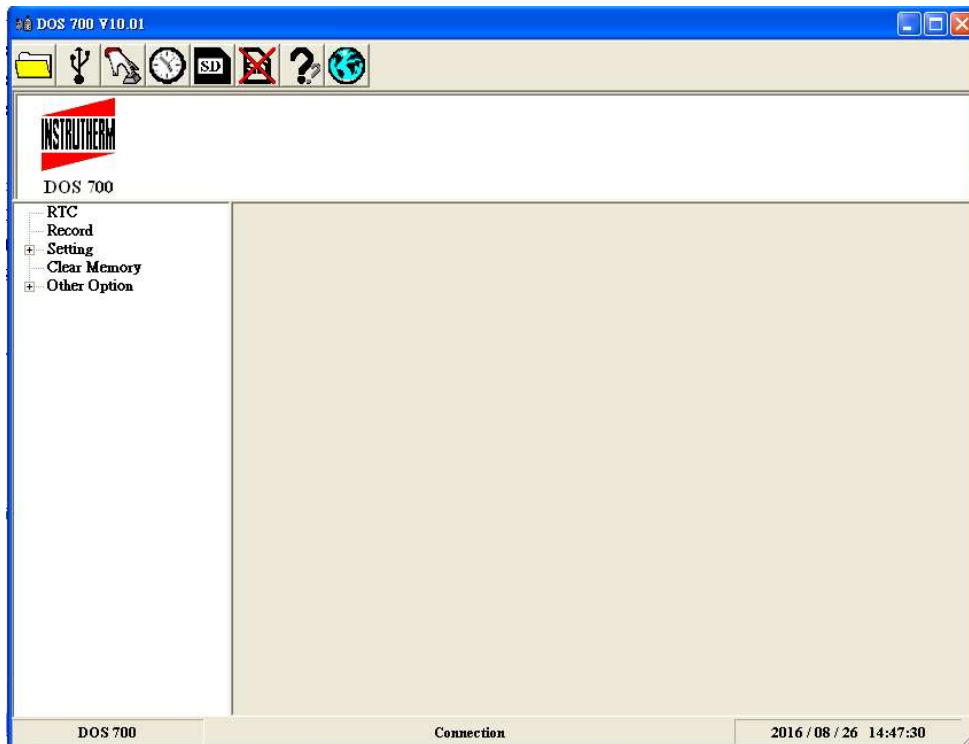
1. Click icon.

2. Check COM Port

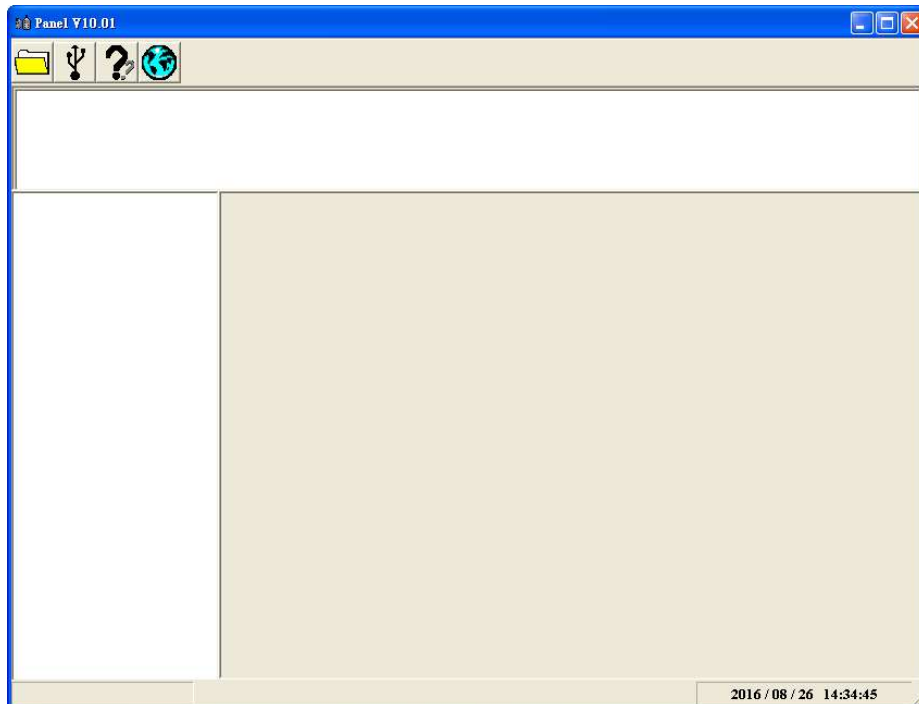



3. Main software screen

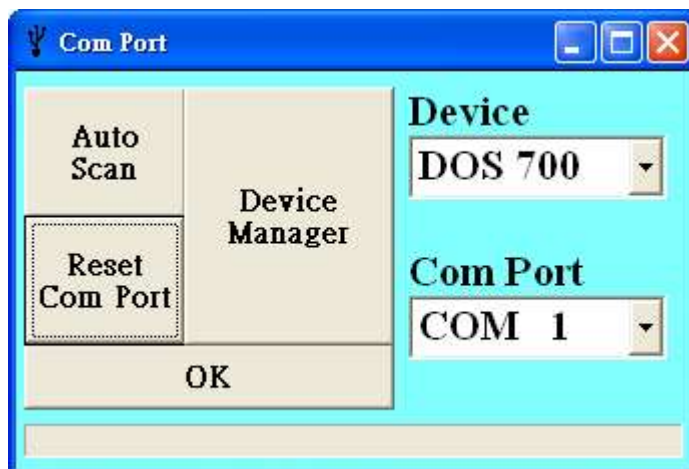
Device connecting



No Device Connection Or COM Port Error

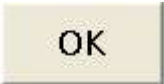


4. Click Main toolbar  Setting comport.



Device select: DOS 700

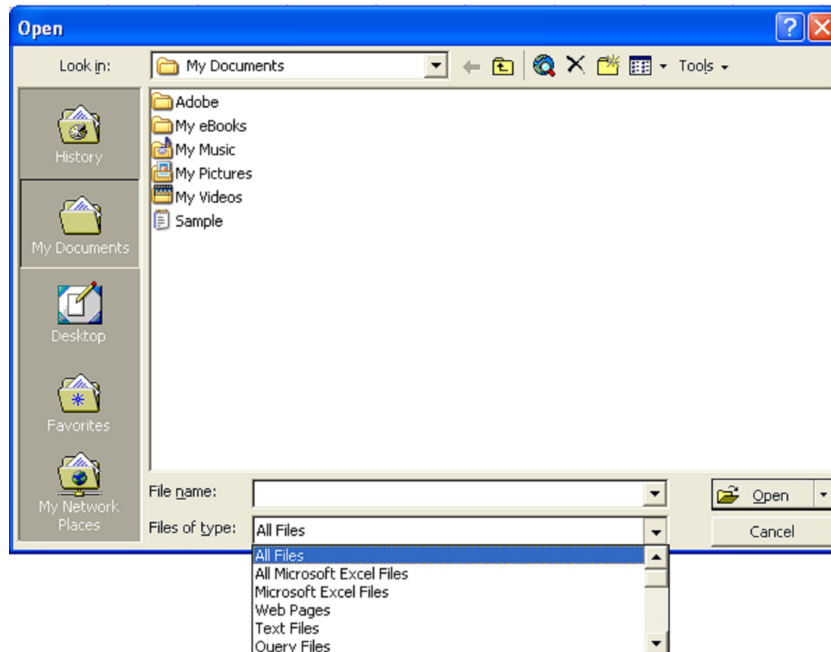
Comport select: PC link device comport

Click  button.

● Data Convert

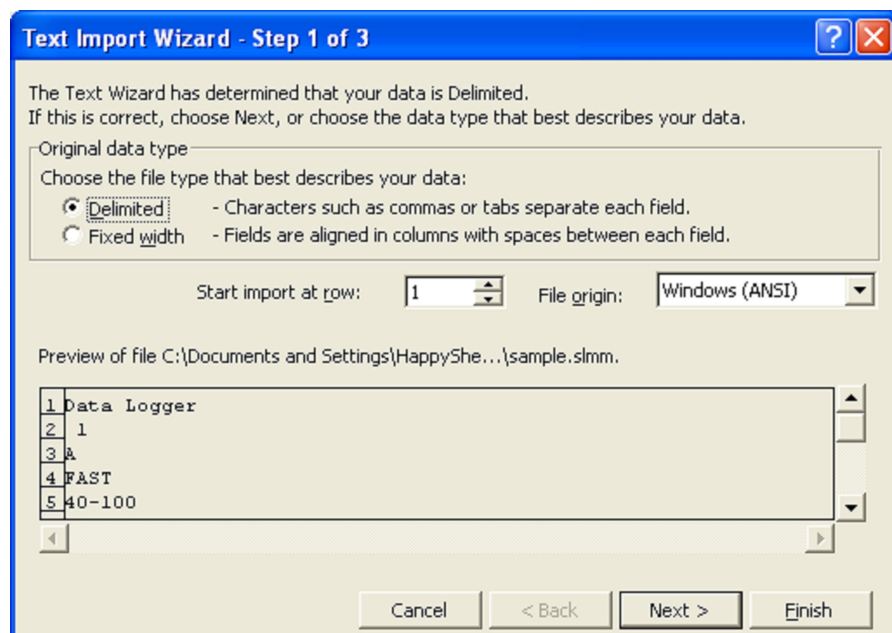
Apply for Excel

Open Microsoft Excel, find the file saved in Excel type, for example, test.xls.



or find any file already saved in HDD, for example, sample.dat.

The "Text Import Wizard" then appears. Follow the steps 1 to 3 to complete.



Click Next> button

Text Import Wizard - Step 2 of 3

This screen lets you set the delimiters your data contains. You can see how your text is affected in the preview below.

Delimiters

☒ Tab ☐ Semicolon ☐ Comma

☐ Space ☐ Other:

☐ Treat consecutive delimiters as one

Text qualifier:

Data preview

No.s	Date Time	dB
1	2009/04/27 14:10:37	55.8
2	2009/04/27 14:10:38	56.1
3	2009/04/27 14:10:39	55.7

Cancel < Back Next > Finish

Click Next> button

Text Import Wizard - Step 3 of 3

This screen lets you select each column and set the Data Format.

'General' converts numeric values to numbers, date values to dates, and all remaining values to text.

Advanced...

Column data format

☒ General

☐ Text

☐ Date:

☐ Do not import column (skip)

Data preview


General	General	General	General
55.1			
No.s	Date Time	dB	
1	2009/04/27 14:10:37	55.8	
2	2009/04/27 14:10:38	56.1	
3	2009/04/27 14:10:39	55.7	

Cancel < Back Next > Finish

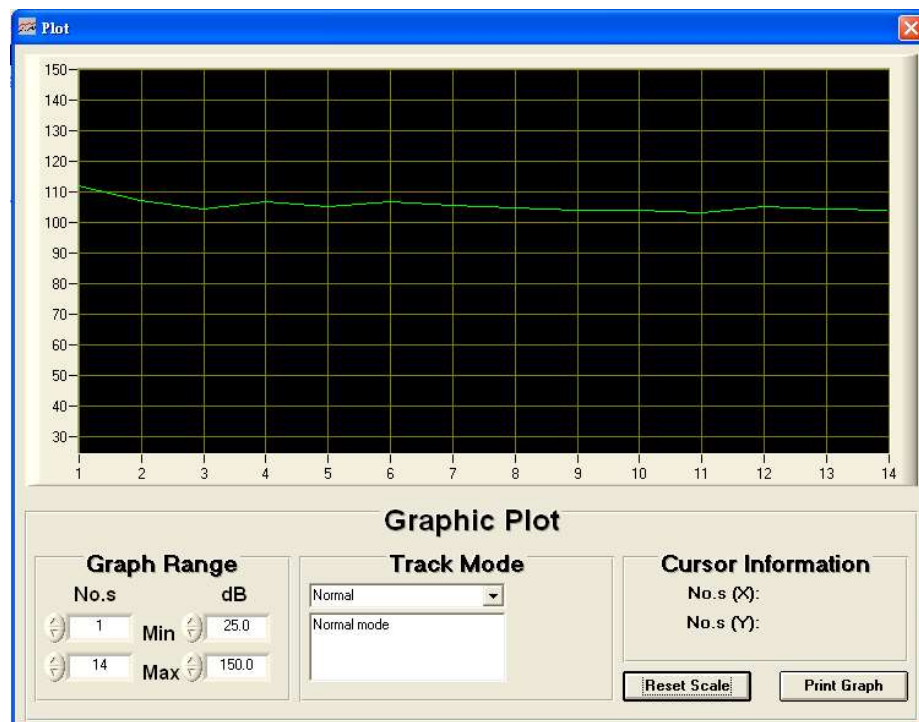
Click **Finish** button

	A	B	C	D
1	DOS 700			
2				
3	HeaderData			
4		D1	D2	D3
5	Start Date/Time	2016/8/26 14:34	2016/8/26 14:34	2016/8/26 14:34
6	Stop Date/Time	2016/8/26 14:48	2016/8/26 14:48	2016/8/26 14:48
7	Total Point	14	14	14
8	Threshold	80 dB	90 dB	80 dB
9	Criterion	90 dB	90 dB	90 dB
10	Exchange Rate	5 dB	5 dB	5 dB
11	Exceedance	105 dB	105 dB	105 dB
12	Interval Time	60 Sec	60 Sec	60 Sec


● Apply for Graph

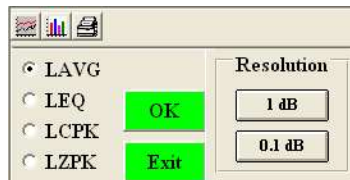
Open a saved data file in the software program and then click .

	D1	D2	D3		No.s	LAVG	LEQ	LCPK	LZPK
Start Date/Time	2016/08/26 14:34:10	2016/08/26 14:34:10	2016/08/26 14:34:10		1	111.9 dB	115.8 dB	143.9 dB	145.7 dB
Stop Date/Time	2016/08/26 14:48:02	2016/08/26 14:48:02	2016/08/26 14:48:02		2	107.0 dB	112.8 dB	143.9 dB	145.7 dB
Total Point	14	14	14		3	104.1 dB	111.1 dB	143.9 dB	145.7 dB
Threshold	80 dB	90 dB	80 dB		4	106.7 dB	112.6 dB	143.9 dB	145.7 dB
Criterion	90 dB	90 dB	90 dB		5	105.1 dB	111.7 dB	143.9 dB	145.7 dB
Exchange Rate	5 dB	5 dB	5 dB		6	106.6 dB	112.4 dB	144.5 dB	145.7 dB
Exceedance	105 dB	105 dB	105 dB		7	105.5 dB	111.7 dB	144.5 dB	145.7 dB
Interval Time	60 Sec	60 Sec	60 Sec		8	104.5 dB	111.1 dB	144.5 dB	145.7 dB
PW Duration	08:00:00	08:00:00	08:00:00		9	103.7 dB	110.6 dB	144.5 dB	145.7 dB
Duration	00:13:49	00:13:49	00:13:49		10	103.8 dB	110.7 dB	144.5 dB	145.7 dB
LAS > dB	(>105)_00:01:23	(>105)_00:01:23	(>105)_00:01:23		11	103.1 dB	110.2 dB	144.5 dB	145.7 dB
ExceedanceTime	00:13:50	00:13:50	00:13:50		12	104.8 dB	111.5 dB	146.0 dB	145.7 dB
Dose	19.6 %	19.6 %	19.6 %		13	104.2 dB	111.2 dB	146.0 dB	145.7 dB
PDose	681.2 %	680.1 %	681.2 %		14	103.8 dB	110.9 dB	146.0 dB	145.7 dB
TWA	78.2 dB	78.2 dB	78.2 dB						
PTWA	103.8 dB	103.8 dB	103.8 dB						
LAVG	103.8 dB	103.8 dB	103.8 dB						
LEP _d	95.5 dB	95.5 dB	95.5 dB						
PLEP _d	110.9 dB	110.9 dB	110.9 dB						
LAEQ	110.9 dB	110.9 dB	110.9 dB						
LCEQ	111.2 dB	111.2 dB	111.2 dB						
LZEQ	124.0 dB	124.0 dB	124.0 dB						
LAE	140.1 dB	140.1 dB	140.1 dB						
LCE	140.4 dB	140.4 dB	140.4 dB						



● Histogram & Ln (Percentile Sound Level)

Open a saved data file in the software program and then click .



Resolution

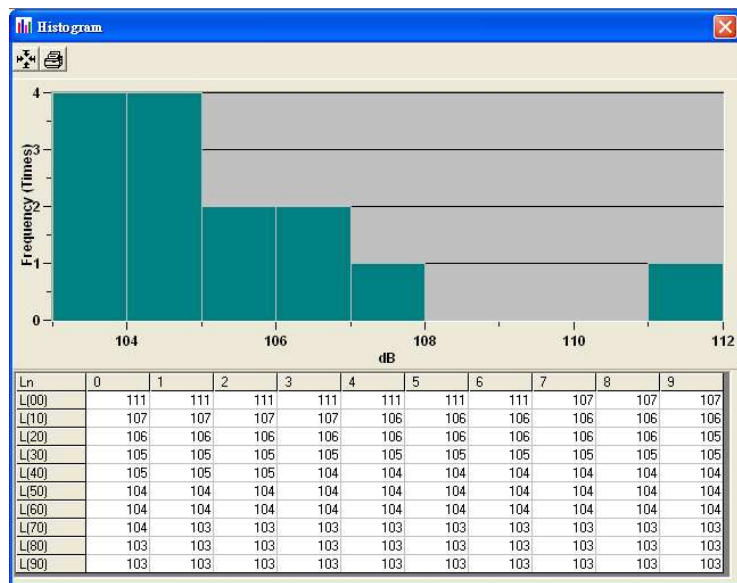
1 dB

0.1 dB

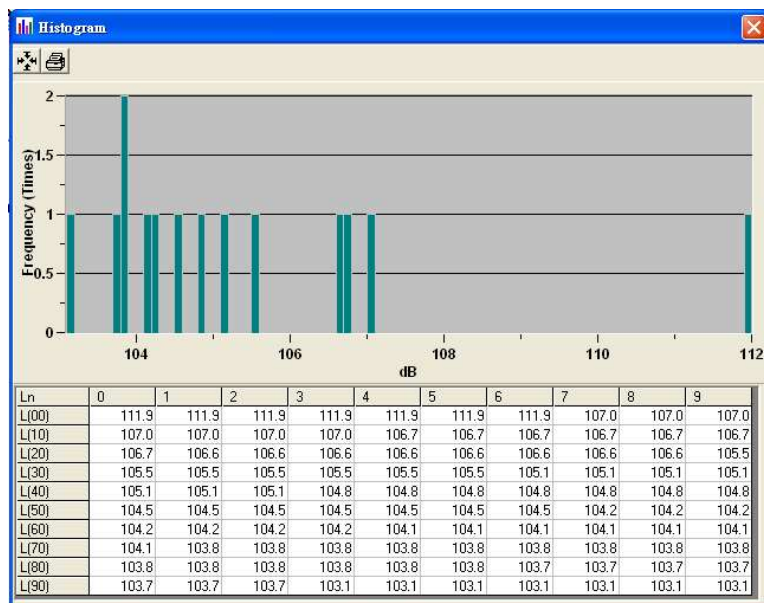
OK

Exit

In the window above, click **1 dB** for the Revolution of 1 dB



Click **0.1 dB** for the Revolution of 0.1 dB



Click  Button to print

● Control Panel



Click

Item. Don't show control panel.



Click  button or Device item , Show control panel.



1. LCD Contrast Setting



Click Button.

Device LCD Contrast setting Get OK.



Device LCD Contrast setting Get fail.



Click Button. Show is set OK.



2. Pause Setting



Click Button.

Device Pause setting Get OK.



Device Pause setting Get fail.



Click Button. Show



is set OK.

3. LCD APO Setting

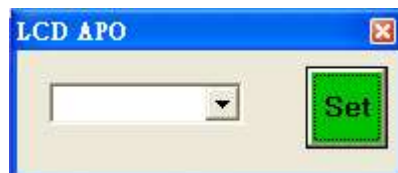


Click Button.

Device LCD APO setting Get OK.



Device LCD APO setting Get fail.



Click Button. Show

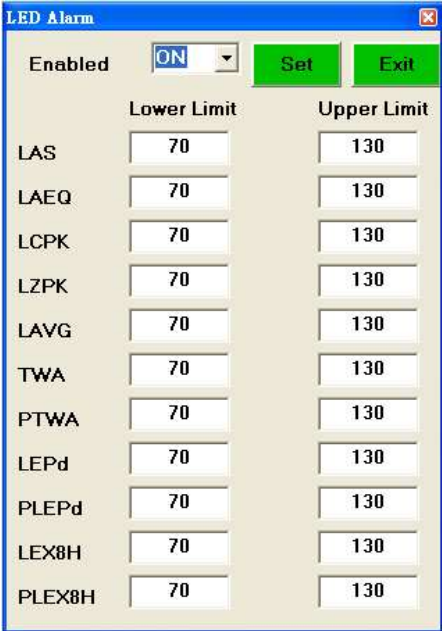


is set OK.

4. LED Alarm Setting

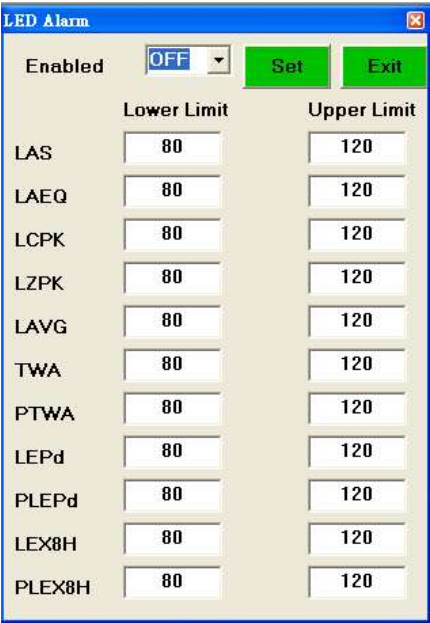


Click Button.
Device LED Alarm setting Get OK.

A dialog box titled "LED Alarm" with a close button (X) in the top right corner. It contains an "Enabled" dropdown menu set to "ON", and "Set" and "Exit" buttons. Below is a table with two columns: "Lower Limit" and "Upper Limit".

	Lower Limit	Upper Limit
LAS	70	130
LAEQ	70	130
LCPK	70	130
LZPK	70	130
LAVG	70	130
TWA	70	130
PTWA	70	130
LEPd	70	130
PLEPd	70	130
LEX8H	70	130
PLEX8H	70	130

Device LED Alarm setting Get fail.

A dialog box titled "LED Alarm" with a close button (X) in the top right corner. It contains an "Enabled" dropdown menu set to "OFF", and "Set" and "Exit" buttons. Below is a table with two columns: "Lower Limit" and "Upper Limit".

	Lower Limit	Upper Limit
LAS	80	120
LAEQ	80	120
LCPK	80	120
LZPK	80	120
LAVG	80	120
TWA	80	120
PTWA	80	120
LEPd	80	120
PLEPd	80	120
LEX8H	80	120
PLEX8H	80	120



Click Button. Show is set OK.



5. DosiMeter Setting



Click Button.

Device DosiMeter setting Get OK.

DosiMeter		Meter 1	Meter 2	Meter 3
Set	Exit			
Enabled	Enabled	Enabled	Disabled	Disabled
Standard	OSHA-90			
Threshold				
Criterion				
Exchange Rate				
Exceedance				
PW Duration				

Device DosiMeter setting Get fail.

DosiMeter		Meter 1	Meter 2	Meter 3
Set	Exit			
Enabled	Enabled	Enabled	Enabled	Enabled
Standard	OSHA80	OSHA80	OSHA80	OSHA80
Threshold	70	70	70	70
Criterion	70	70	70	70
Exchange Rate	3	3	70	70
Exceedance	70	70	70	70
PW Duration	00 00	00 00	00 00	00 00




Click Button. Show



is set OK.

6. Auto Lock Keypad Setting

Click  Button.

Device Auto Lock Keypad setting Get OK.



Device Auto Lock Keypad setting Get fail.

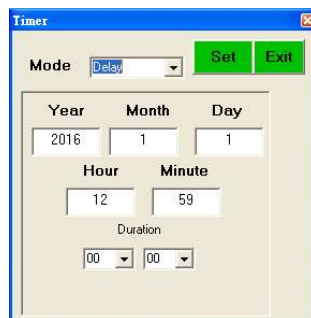


Click  Button. Show  is set OK.

7. Timers Setting

Click  Button.

Device Timers setting Get OK.



Device Timers setting Get fail.



Click  Button. Show  is set OK.

8. Auto Scroll Screens Setting

Click  Button.

Device Auto Scroll Screens setting Get OK.



Device Auto Scroll Screens setting Get fail.



Click  Button. Show  is set OK.

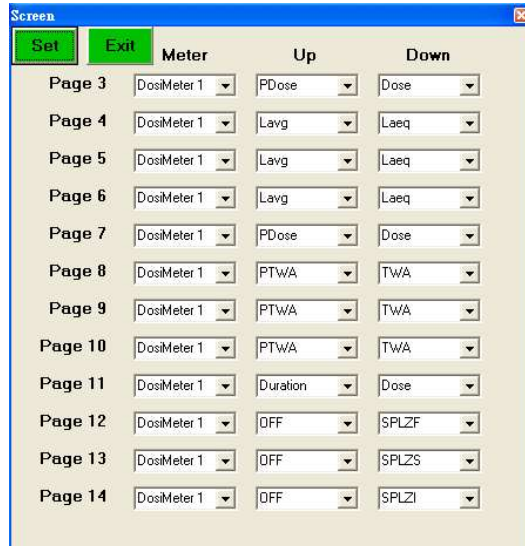


9. Screen Setting



Click Button.

Device Screen Setting Get OK.



Device Screen Setting Get fail.



Click Button. Show



is set OK.

10. Welcome Text Setting

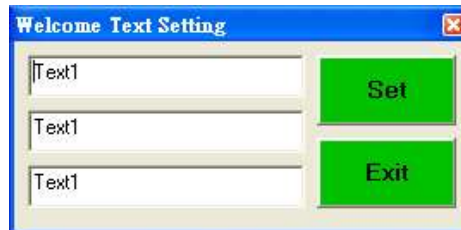


Click Button.

Device Welcome Text setting Get OK.



Device Welcome Text setting Get fail.



Click Button. Show



is set OK.

11. Calibration Setting



Click Button.



Click Button. Show



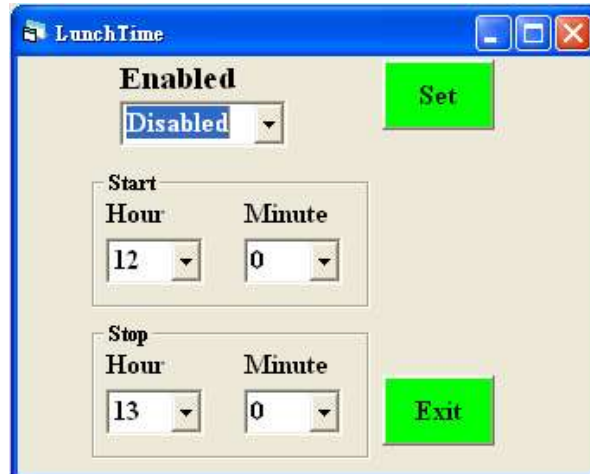
is set OK.

12. Lunch Time Setting



Click Button.

Device Get Lunch Time OK



Click Button. Show  is set OK.



13. Record Interval Time Setting



Click Button.

Device Get Interval Time OK



Click Button. Show  is set OK.



■ RTC (Real Time Clock)



Click on the **Menu Bar** to set the meter time to PC system time.

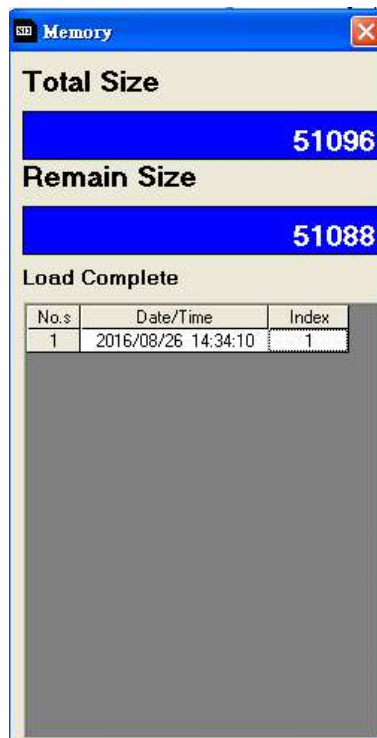


Click Button. Show is set OK.

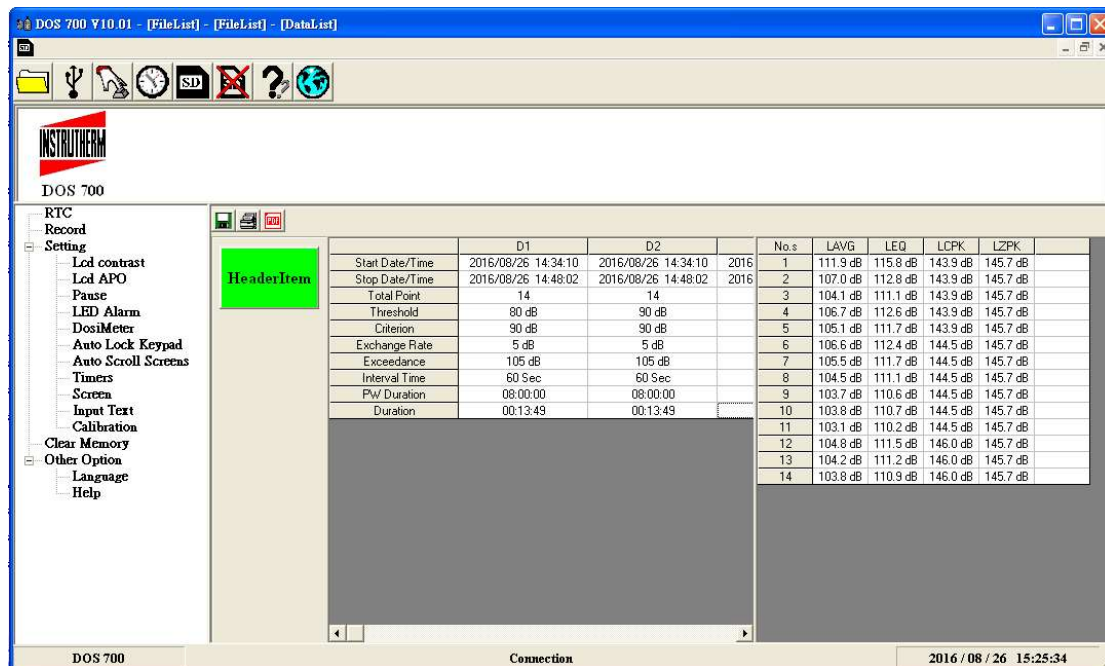



● Read SD Card

Click  on the **Menu Bar** to Read SD card



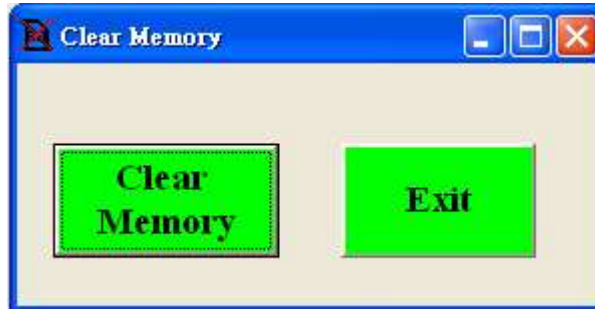
Click on a SET number to view the set's details.




Click  button to Export PDF File.

- **Delete SD Card File**

Click  on the **Menu Bar** to Erase SD card



Click  Button. Erase memory data.

● Language

Click  Bottom . Show

